



PARTS LIST FOR **540ESC DIE GRINDER (20,000 RPM)** **540ESSC DIE GRINDER (14,000 RPM)**

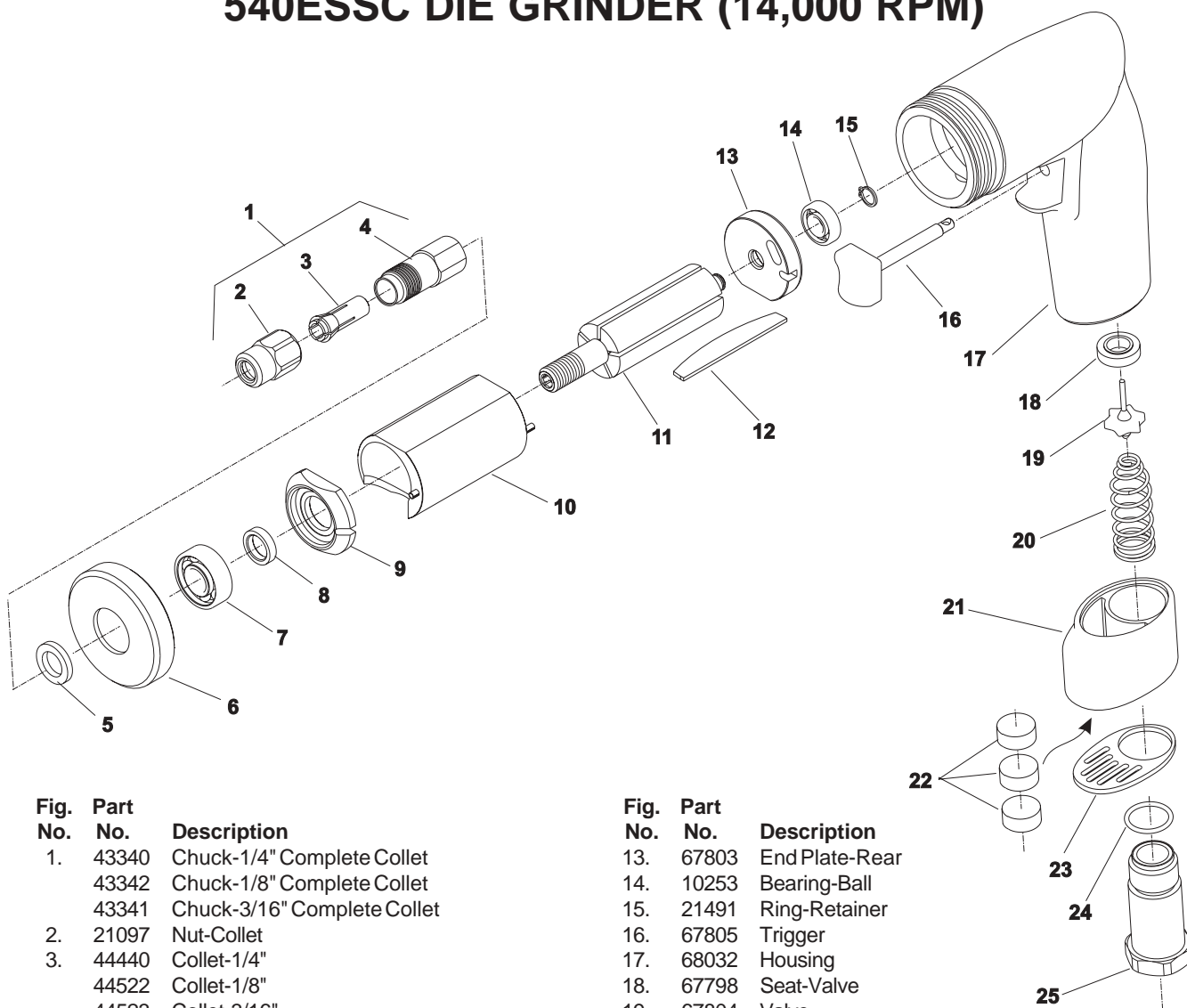


Fig. No.	Part No.	Description
1.	43340	Chuck-1/4" Complete Collet
	43342	Chuck-1/8" Complete Collet
	43341	Chuck-3/16" Complete Collet
2.	21097	Nut-Collet
3.	44440	Collet-1/4"
	44522	Collet-1/8"
	44523	Collet-3/16"
	66038	Collet-6 mm
4.	21096	Body-Collet
5.	44122	Spacer-Chuck
6.	64187	Ring-Lock
7.	10257	Bearing-Ball
8.	44488	Spacer-Rotor
9.	64059	End Plate-Front
10.	64057	Cylinder (540ESC)
	65916	Cylinder (540ESSC)
11.	64185	Rotor
12.	63192	Ass'y-Rotor Vane (Set of 5)

Fig. No.	Part No.	Description
13.	67803	End Plate-Rear
14.	10253	Bearing-Ball
15.	21491	Ring-Retainer
16.	67805	Trigger
17.	68032	Housing
18.	67798	Seat-Valve
19.	67804	Valve
20.	67828	Spring
21.	67800B	Muffer
22.	67807	Silencer-Pad (3)*
23.	67801A	Cap-Muffer
24.	14378	Ring-"O"
25.	67819	Adapter-Inlet (Includes Fig. 24)

Items Not Shown

30465	Wrench-9/16"
30466	Wrench-11/16"
30506	Wrench-3/16" Allen

SIoux
TOOLS INC.

2901 FLOYD BOULEVARD ■ PO BOX 507 ■ SIOUX CITY, IOWA 51102-0507 USA ■

*Order Quantity As Required
 FURNISH CATALOG, SERIAL, AND MODEL
 NUMBER WHEN ORDERING PARTS

Printed In U.S.A.